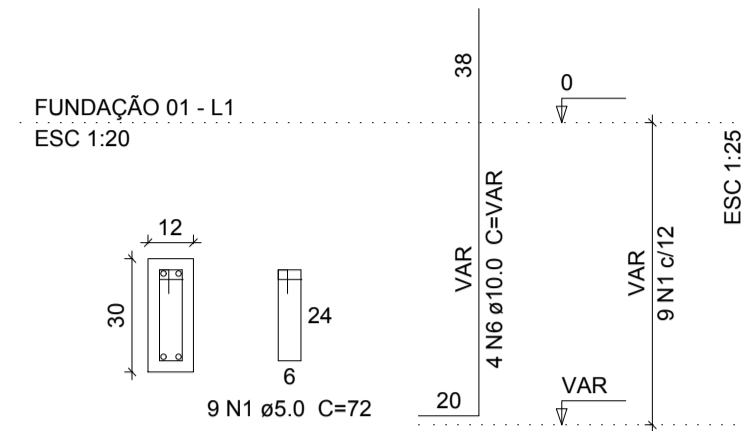
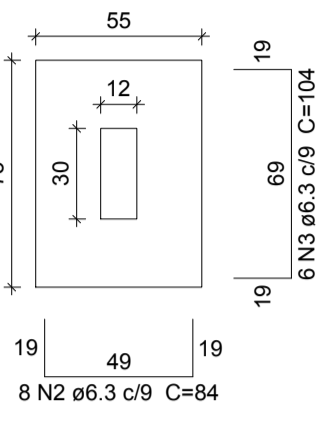


P1=P2=P3=P4=P6=P7=P8=P9=P10

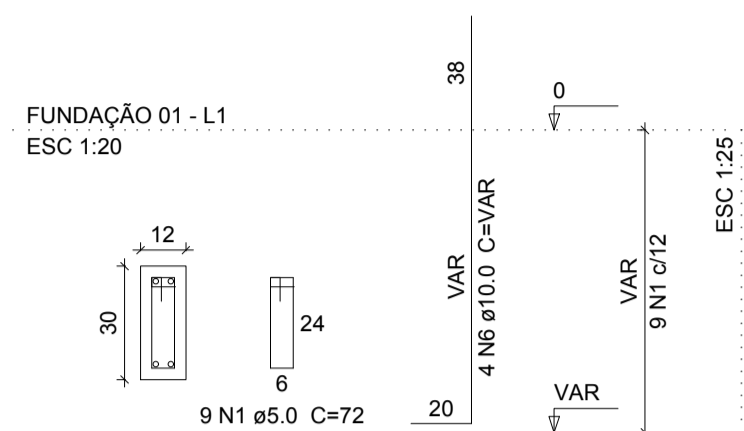


S1=S2=S3=S4=S6=S7=S8=S9=S10
PLANTA ESC 1:25
CORTE ESC 1:25

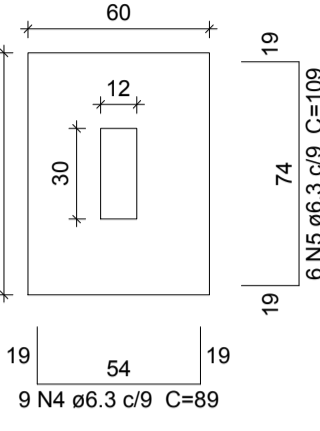


Solo com capacidade de suporte > 2.00 kgf/cm²
Solo compactado sobre a sapata
peso específico > 1600.00 kgf/m³

P5=P11



S5=S11
PLANTA ESC 1:25
CORTE ESC 1:25



Solo com capacidade de suporte > 2.00 kgf/cm²
Solo compactado sobre a sapata
peso específico > 1600.00 kgf/m³

Relação do aço

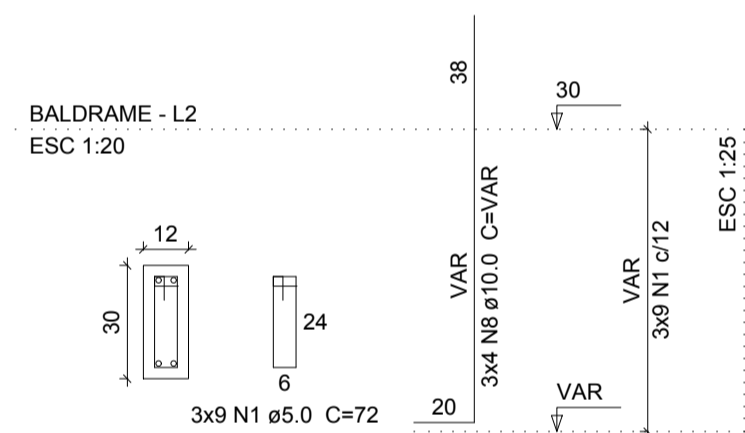
9xS10	2xS11				
AÇO	N	DIAM (mm)	QUANT (Barras)	UNIT (cm)	C.TOTAL (cm)
CA60	1	5.0	99	72	7128
CA50	2	6.3	72	84	6048
	3	6.3	54	104	5616
	4	6.3	18	89	1602
	5	6.3	12	109	1308
	6	10.0	44	VAR	VAR

Resumo do aço

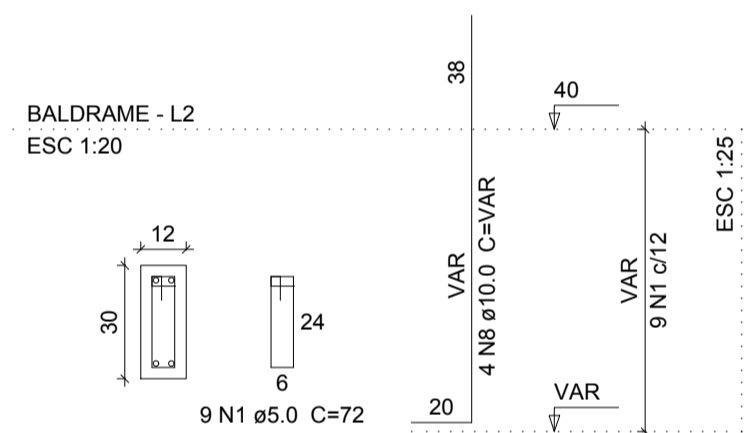
AÇO	DIAM (mm)	C.TOTAL (m)	PESO + 10 % (kg)
CA50	6.3	145.8	39.2
	10.0	67.4	45.7
CA60	5.0	71.3	12.1
PESO TOTAL (kg)			
CA50			84.9
CA60			12.1

Volume de concreto (C-25) = 1.56 m³
Área de forma = 16.49 m²

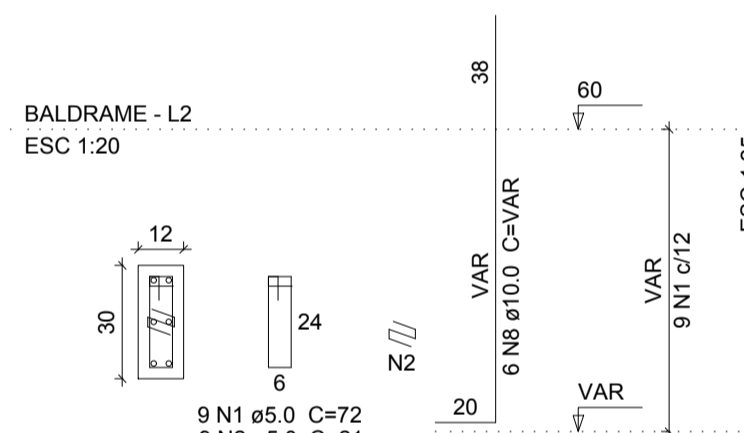
P12=P13=P16



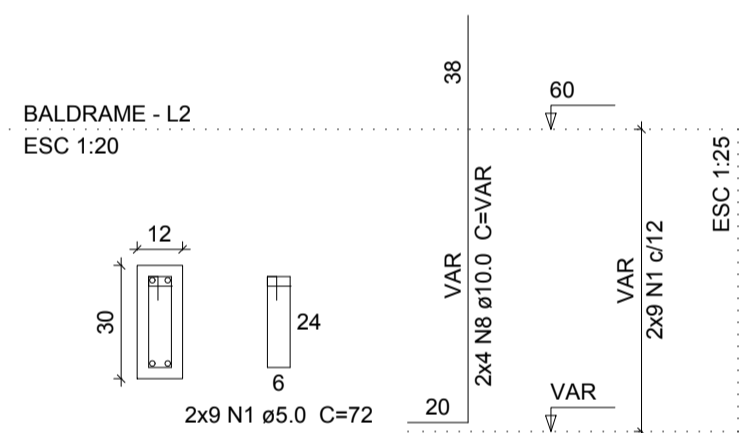
P19



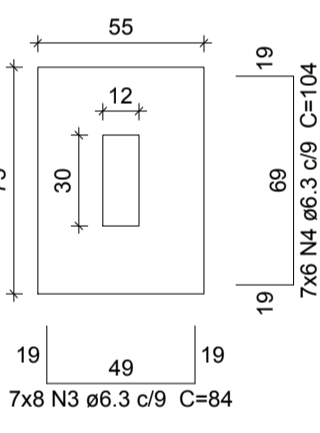
P20



P21=P22

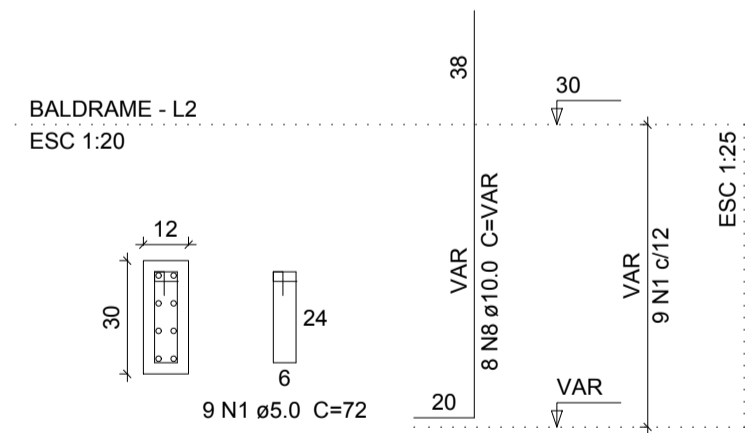


S12=S13=S16=S19=S20=S21=S22
PLANTA ESC 1:25
CORTE ESC 1:25

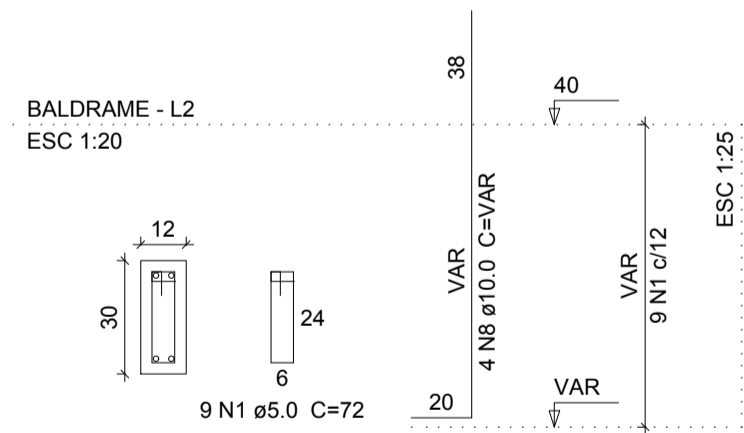


Solo com capacidade de suporte > 2.00 kgf/cm²
Solo compactado sobre a sapata
peso específico > 1600.00 kgf/m³

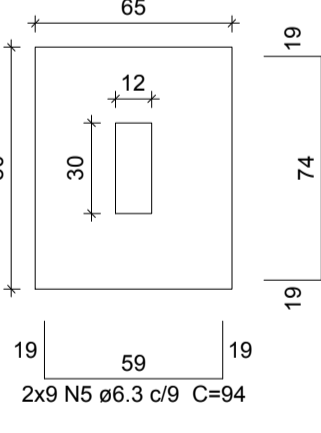
P14



P17

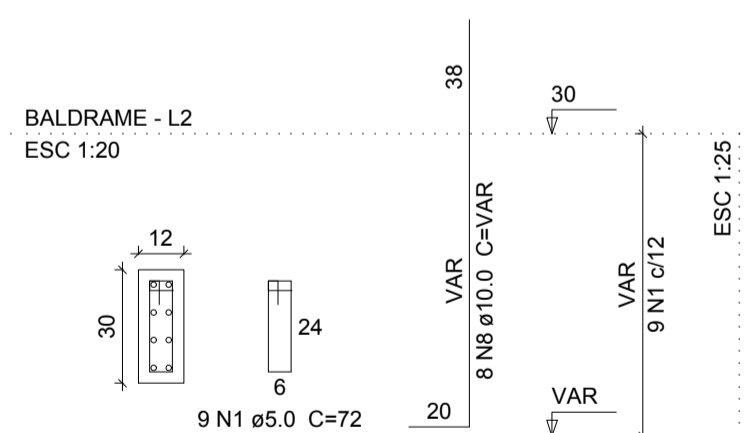


S14=S17
PLANTA ESC 1:25
CORTE ESC 1:25

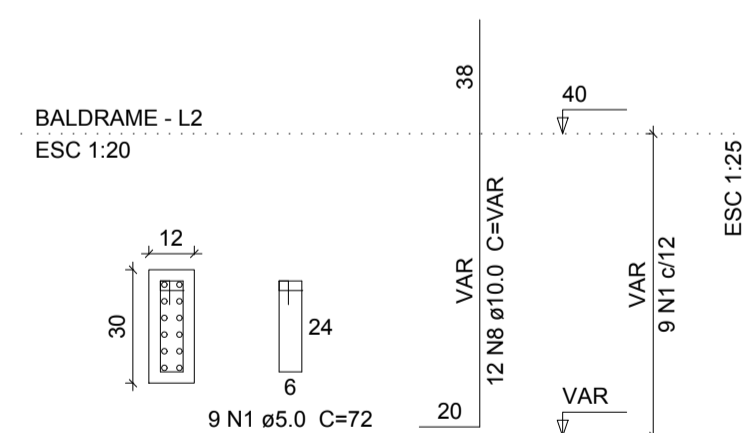


Solo com capacidade de suporte > 2.00 kgf/cm²
Solo compactado sobre a sapata
peso específico > 1600.00 kgf/m³

P15



P18



Relação do aço

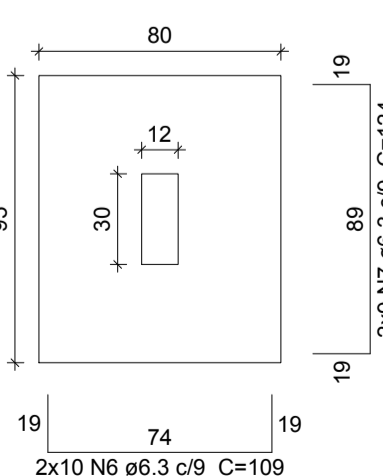
AÇO	N	DIAM (mm)	QUANT (Barras)	UNIT (cm)	C.TOTAL (cm)
CA60	1	5.0	99	72	7128
	2	5.0	9	21	189
CA50	3	6.3	56	84	4704
	4	6.3	42	104	4368
	5	6.3	18	94	1692
	6	6.3	34	109	3706
	7	6.3	18	124	2232
	8	10.0	62	VAR	VAR

Resumo do aço

AÇO	DIAM (mm)	C.TOTAL (m)	PESO + 10 % (kg)
CA50	6.3	167.1	45
	10.0	94.9	64.3
CA60	5.0	73.2	12.4
PESO TOTAL (kg)			
CA50			109.3
CA60			12.4

Volume de concreto (C-25) = 1.76 m³
Área de forma = 16.99 m²

S15=S18
PLANTA ESC 1:25
CORTE ESC 1:25



Solo com capacidade de suporte > 2.00 kgf/cm²
Solo compactado sobre a sapata
peso específico > 1600.00 kgf/m³

*VER NOTAS E DETALHES NA PRANCHA 10/10

PROJETO DE ESTRUTURA EM CONCRETO ARMADO



Orçamento, Consultoria e Projetos em Engenharia
Travessa Sizenando Porto, S/N - Centro,
NOSSA SENHORA DAS DORES - SERGIPE
CNPJ: 21.161.319/0001-79
CREA: 11545-2

E-mail: ocpereprojetos@gmail.com
FONE : (79) 99952.5315/99947.5134

ARQUIVO : EST_CRAS_AREIABRANCA_RO	LOCAL : RUA C, LOTEAMENTO MARIA LUCIA, CENTRO, NOSSA SENHORA DAS DORES -SERGIPE
ENG. RESPONSÁVEL : ALBERVAN JOSÉ SOUZA SANTANA RN 270893330-2	PROPRIETÁRIO : PREFEITURA MUNICIPAL DE NOSSA SENHORA DAS DORES - CNPJ: 13.094.446/0001-74
DESENHO : ALBERVAN JOSÉ SOUZA SANTANA	REVISÃO : 00 DATA : SETEMBRO/2018
PROJETO : FORMA E ARMAÇÃO SAPATAS E ARRANQUE DE PILAR	ESCALA : INDICADA FOLHA : 09